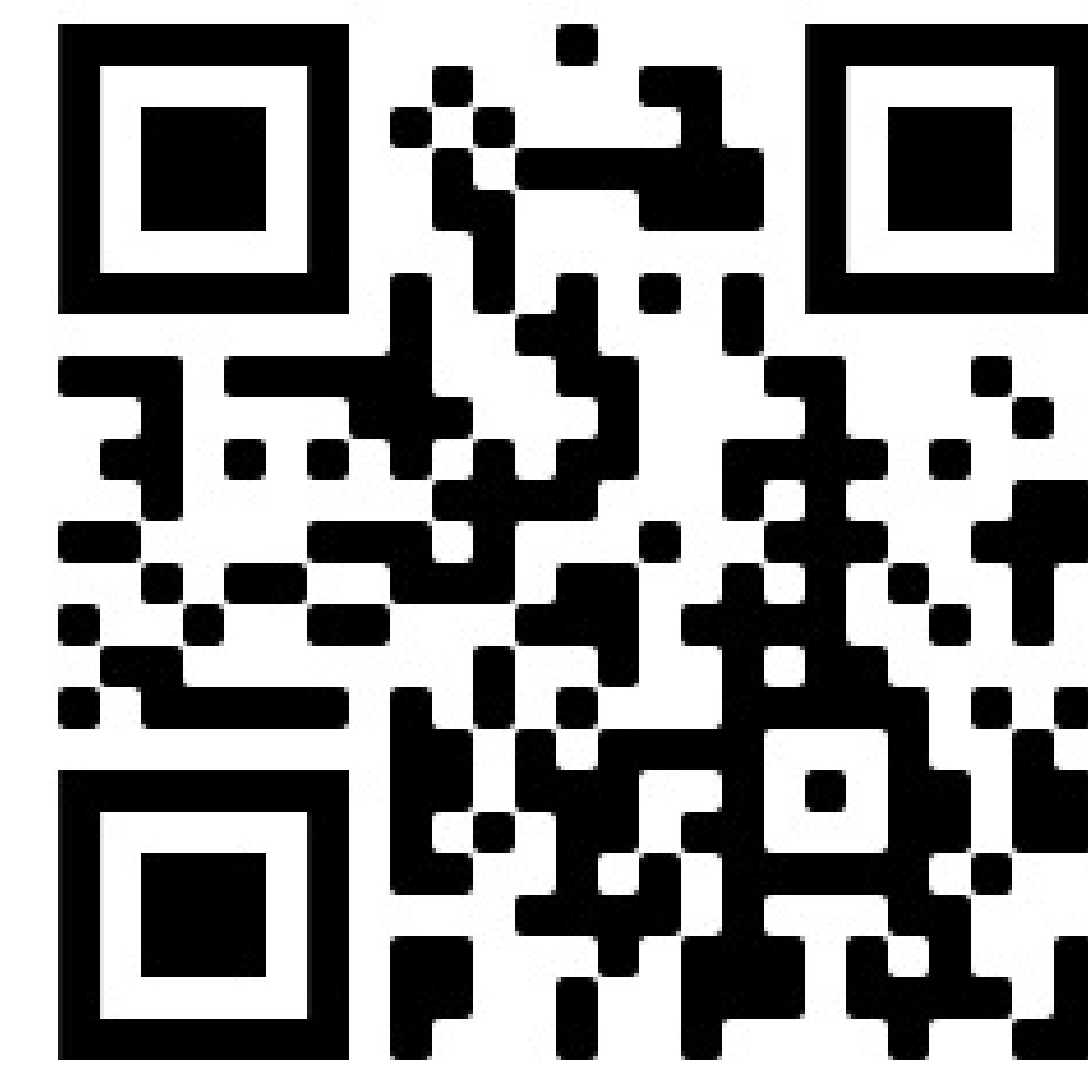


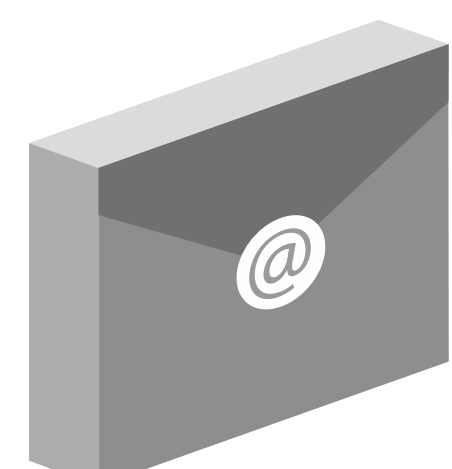
ACCESS & SHARE IMAGING RECORDS ONLINE



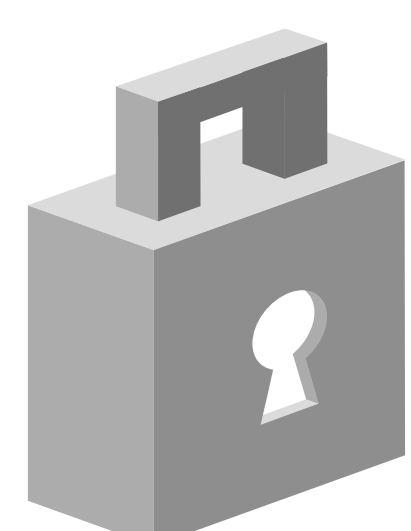
Enroll online at www.pocket.health/BMI or scan above 



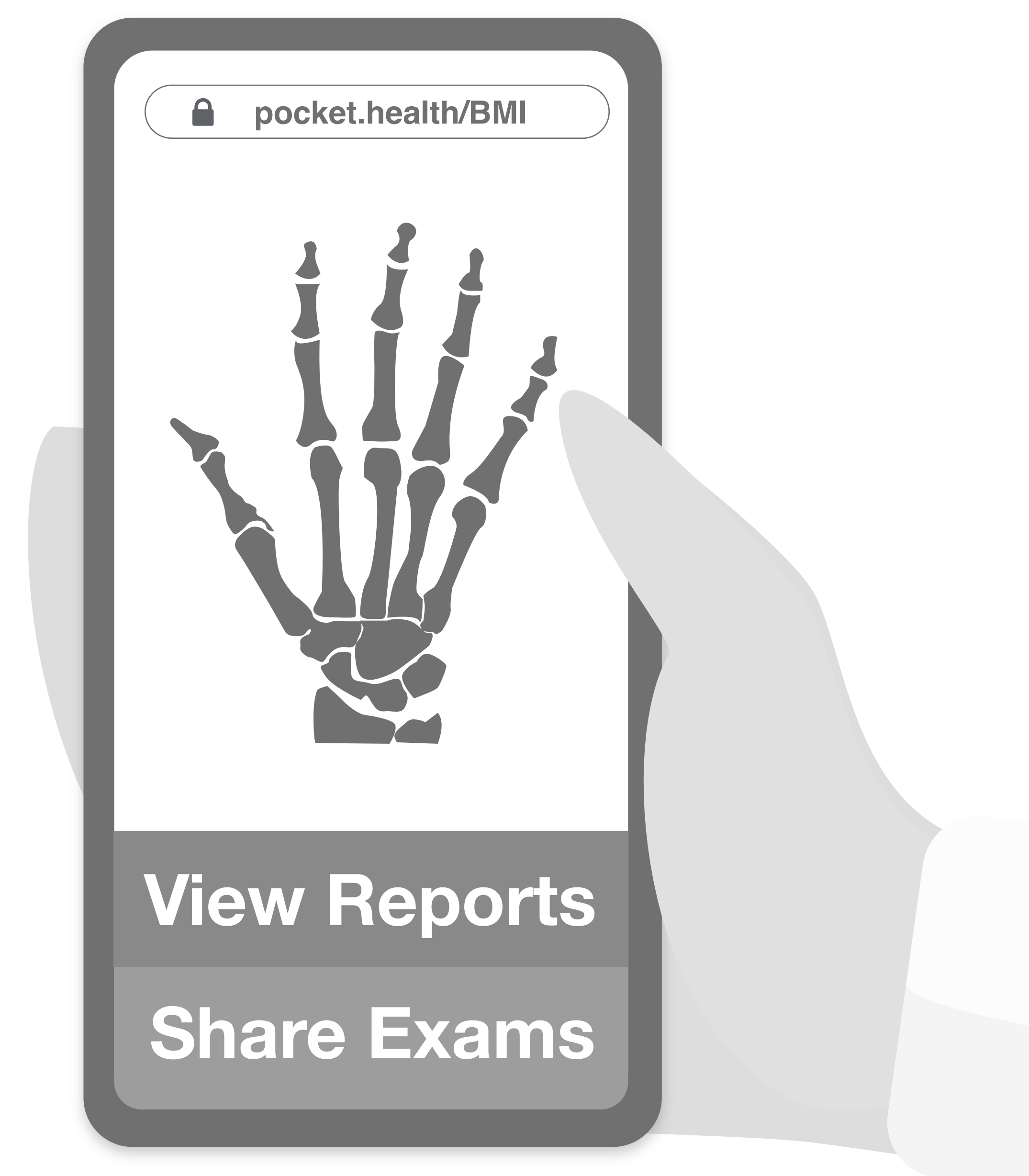
Imaging Records & Reports are stored permanently and are accessible to you at any time, from any device.



Records can be shared online with any doctor instantly and in full diagnostic quality.



Strong privacy and encryption protocols keep your medical information as secure as your banking information.



How to Enroll For Access:

Step 1 Go to www.pocket.health/BMI online.

Step 2 Pay a **\$5.00 transfer fee** to access your most recent exam and available historical imaging records from BMI. Additional fees* are required to access future images.

*Once you have paid the \$5.00 transfer fee, any new exams performed at BMI within two-weeks will automatically be added to your account without charge (a two-week "grace period").

OR

Once enrolled, a **yearly subscription of \$49** is also available to access all existing AND future imaging for you and up to four consenting family members.

Step 3 When your records are ready to view, you'll receive an email from PocketHealth. If you've had prior imaging completed at the clinic this email is received within **24-48 hours** after enrolment. For recent exams, imaging will be available once finalized and **reports will be available 48 hours after finalization.**

Done! Share your imaging records with your doctor instantly and have full control over your medical imaging information.

Have Questions?

Please contact PocketHealth below (not the clinic front desk)

Visit: www.pocket.health/BMI

Email: help@pocket.health

Call: 1 855-381-8522 (toll-free)

